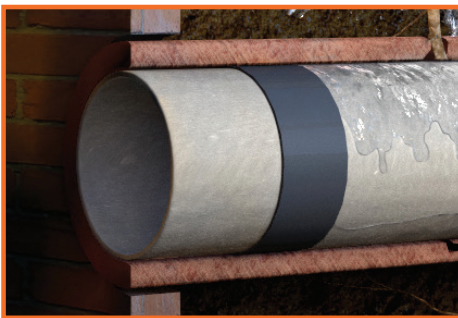


## **INSIGNIA™ COMPRESSION SEALS**

Insignia™ Compression Seals are hydrophilic compression gasket systems that provide a verifiable non-leaking connection for main-to-lateral CIPP junctions, lateral linings and mainline sectional repairs. Insignia™ systems are seamlessly molded for a 360° compression seal and are ASTM F3240 compliant.

### **CONFIGURATIONS:**



**END SEAL SLEEVE**

#### **Insignia™ End Seal Sleeve**

- Provides a large sealing surface guaranteeing a uniform, watertight seal
- 360° Swelling Gasket — Seamlessly molded with no joints or weak points, preventing any damage or inefficient sealing of the annular space between the liner & the host pipe
- Retaining Ring — Placed on the leading end of the liner to hold the End Seal Sleeve in place to ensure no movement is allowed during CIPP rehabilitation
- Significant Surface Area — Allows for more swelling than less precise sealing methods such as hydrophilic tape, rope or paste
- Compatible with Multiple Types of CIPP — The End Seal Sleeve will swell in the presence of water regardless of the type of host pipe



**CONNECTION HAT**

#### **Insignia™ Hydrophilic Connection Hat**

- Provides a positive compression seal at the main-to-lateral junction of a sewer collection system
- 360° Sealing Gasket — Prevents water from tracking behind the liner at the spot where maximum infiltration & inflow (I&I) occurs



**O-RINGS**

#### **Insignia™ O-rings**

- Proven as a long-term solution for sealing lateral lining terminations, a lateral liner overlapping a connection seal & for sealing section liner terminations
- Can be attached to a liner that is inverted into the pipeline to provide a compression seal at the termination points of the liner. This procedure positions the O-rings between the host pipe & the liner tube or between a cured liner & a new liner (cold joint), sealing any annular space & providing a long-term, flexible seal