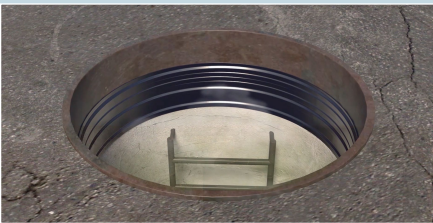
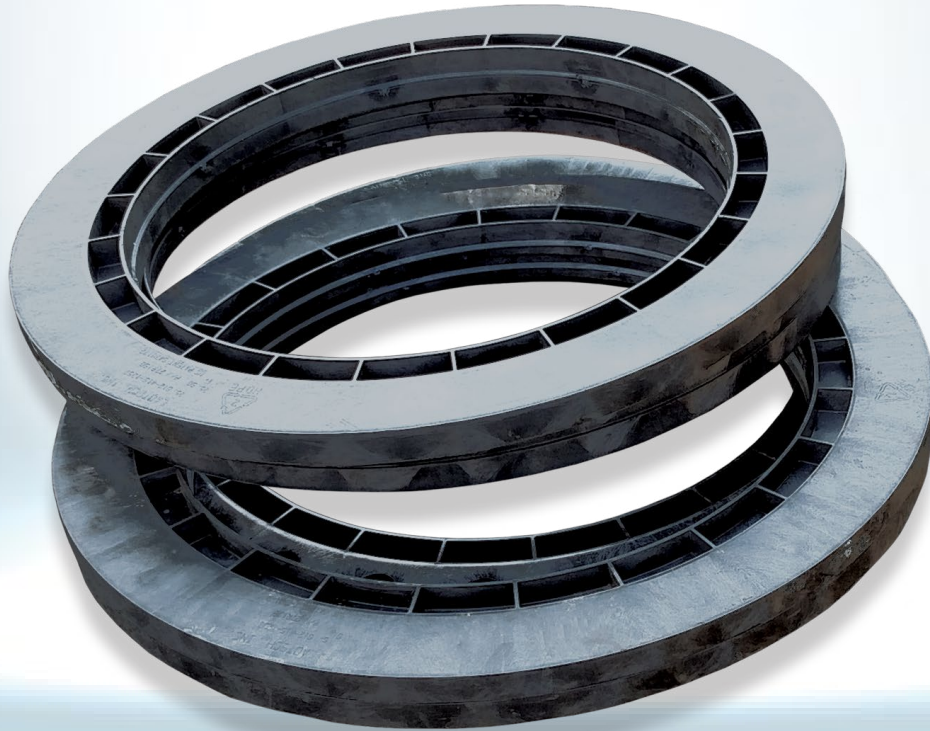


TIRED OF FAILING MANHOLES?

Learn Why Engineers & Contractors are Ditching Concrete and Choosing Ladtech



CORROSION PROOF

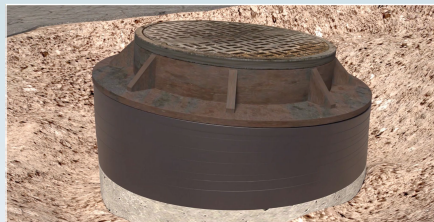
- Impervious to Hydrogen Sulfide Gas (H₂S)
- No Deterioration from Road Salt



ELIMINATE I & I

- Butyl Rubber Sealant Eliminates Infiltration
- Completely Watertight

UV RESISTANT



EASY INSTALLATION

- Lightweight Grade Rings
- Slope Rings Allow Easy Adjustment to Any Grade
- Rings as Thin as 1/4" for Precision Fit
- Easily Specifiable



DURABILITY

- Built for Heavy Traffic - H25 Traffic Rated
- 100-Year Life Expectancy

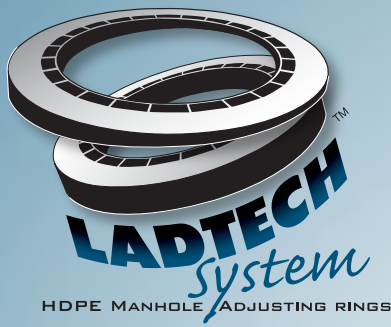


ENVIRONMENTALLY FRIENDLY

- Made from 100% Recycled HDPE
- Made in the USA



SPECIFY THE LADTECH SYSTEM
High Density Polyethylene Manhole Adjusting Rings



SPECIFY THE LADTECH SYSTEM

High Density Polyethylene Manhole Adjusting Rings



ROUND RINGS

Available In:

- 24" and 27" with Adjustments of 1.25", 1.5", 2", 4" and .75" to 1.5" Slope
- 30" with Adjustments of 1.5", 2.25", 4" and 1.5" to 2.25" Slope
- 32" with Adjustments of 2", 3", 3" fiberglass and 1.25" to 2.25" Slope
- 34" with Adjustments of 2", 3" and 1.25" to 2.25" Slope
- 36" with Adjustment of 1.25", 2.25", 3.00" and 2.50" to 1.50" Slope



SQUARE RINGS

Available In:

- 24" x 24" with Flat Adjustments of 1.5", 2", 2.75"
- 24" x 24" with Slope Adjustments of 1.25" to 2.75" and 2" to 2.75"



RECTANGLE RINGS

Available In:

- 2436F150 - 24" X 36" X 1.50"
- 2436F200 - 24" X 36" X 2.00"
- 2436F275 - 24" X 36" X 2.75"
- 2436SX275 - 24" X 36" / 2.75" X 1.25" SIDE / SIDE (3' leg) Slope
- 24S36X275 - 24" X 36" X 2.75" X 1.25" FRONT / BACK (2' leg) Slope
- 2436SX175 - 24" X 36" / 1.75" X 1.25" (3' leg) Slope



SPACER RINGS

Available In:

- 24" X .25" Round
- 27" X .25" Round
- 30" X .25" Round
- 32" X .25" Round
- 34" X .25" Round
- 36" X .25" Round
- 24" X 24" X .25" Square
- 24" X 36" X .25" Rectangular



CON-SEAL BUTYL SEALANT

Available In:

- CS-102 - .5" x 21'
- CS-202 - 5" x 21'
- 12 Rolls per Carton

MMG
816-746-6669

| ms-sales@mmgonline.net |
kc-sales@mmgonline.net

D&W Systems
601-924-5522