

**Water Specialties
Model TP1 (MLI1) / 150 psi
Replacement Meter Head Assembly
Sizes 2" to 72"**

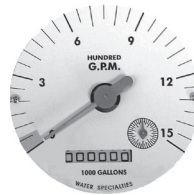
DESCRIPTION

MODEL TP1 METER HEAD ASSEMBLIES are manufactured to the highest standards. Materials used on all meters and flow ranges for the low velocity meter meet or exceed AWWA standard C704-02. The bolt-on design permits use in a wide range of existing applications with up to 150 psi working pressure. It is necessary, upon ordering, to furnish the meter size, model number and serial number of the meter it is replacing.

REGISTER OPTIONS

INDICATOR-TOTALIZER is mechanically driven by the meter mechanism and features a full 4" diameter, 250 degree sweep dial with a six digit, straight reading type totalizer and sweep test hand. The indicator drive mechanism is temperature compensated so the indicator will be accurate at all points on the dial when operated between 32° and 140° F. The indicator dial can be furnished in GPM, CFS, MGD or any standard liquid measuring units with choice of standard totalizer measuring units. The bonnet, with padlock hasp, is O-ring sealed to the meter head.

Indicator- Totalizer





FEATURES

PROPELLER is magnetically coupled with the drive mechanism through the sealed oil filled gearbox. This completely eliminates water entering the meter assembly, as well as the need for any packing gland. The propeller is a conical shaped three bladed propeller, injection molded of thermoplastic material resistant to normal water corrosion and deformity due to high flow velocities.

BEARING in propeller is a water lubricated ceramic sleeve and spindle bearing system with a ceramic/stainless steel spindle. Dual ceramic thrust bearings, standard on all meters, handle flows in both forward and reverse directions. The bearing design promotes extended periods of maintenance free propeller

operation. Bearings within the sealed meter mechanism are shielded precision stainless steel bearings and are factory lubricated for the life of the meter.

CHANGE GEARS may be easily exchanged in the field when changing the dial, or when recalibrating for different pipe sizes. It is not necessary to remove pressure from the line for these changes.

O-RING SEALS are used at the meter head and all points where seals are required, making the meter mechanism completely immune to any of the corrosive effects of atmospheric moisture or the liquids measured by the meter assembly.



Part Numbers, Mechanical Registers

| TP | 1 | XX | A | 1 | 2 | B | - | --- | - | -- |
|---|-----|----|---|---|---|---|---|-----|---|----|
| CONNECTION OPTIONS: | | | | | | | | | | |
| → Top Plate Only 150 PSI (ML1/MLT1) | 1 | | | | | | | | | |
| Top Plate Only 300 PSI (ML2/MLT2) | 2 | | | | | | | | | |
| METER SIZE | | | | | | | | | | |
| 2" Top Plate Meter | 02 | | | | | | | | | |
| 3" Top Plate Meter | 03 | | | | | | | | | |
| 4" Top Plate Meter | 04 | | | | | | | | | |
| 6" Top Plate Meter | 06 | | | | | | | | | |
| 8" Top Plate Meter | 08 | | | | | | | | | |
| 10" Top Plate Meter | 10 | | | | | | | | | |
| 12" Top Plate Meter | 12 | | | | | | | | | |
| 14" Top Plate Meter | 14 | | | | | | | | | |
| 16" Top Plate Meter | 16 | | | | | | | | | |
| 18" Top Plate Meter | 18 | | | | | | | | | |
| 20" Top Plate Meter | 20 | | | | | | | | | |
| 24" Top Plate Meter | 24 | | | | | | | | | |
| 30" Top Plate Meter | 30 | | | | | | | | | |
| 36" Top Plate Meter | 36 | | | | | | | | | |
| 42" Top Plate Meter | 42 | | | | | | | | | |
| 48" Top Plate Meter | 48 | | | | | | | | | |
| Top Plate Configuration Options | | | | | | | | | | |
| → Standard Top Plate | A | | | | | | | | | |
| Non Standard Tube | X | | | | | | | | | |
| Propeller Options | | | | | | | | | | |
| → Standard | 1 | | | | | | | | | |
| High Velocity | 2 | | | | | | | | | |
| Standard Velocity Slip on Separator | 3 | | | | | | | | | |
| High Velocity Slip on Separator | 4 | | | | | | | | | |
| Register Options | | | | | | | | | | |
| Totalizer | 1 | | | | | | | | | |
| → Indicator/Totalizer | 2 | | | | | | | | | |
| Output Options | | | | | | | | | | |
| No Outputs | - | | | | | | | | | |
| 4-20 Analog Only (TR15/TR16) | A | | | | | | | | | |
| → Dry Contact Pulse & 4-20 Analog (TR12 + TR16) | B | | | | | | | | | |
| Dry Contact Pulse (TR04/TR12) | C | | | | | | | | | |
| Extension Options | | | | | | | | | | |
| → Meter Mount (Standard) | - | | | | | | | | | |
| 6" Long Extension (Mech or Digital) | 006 | | | | | | | | | |
| 7" Long Extension (Mech or Digital) | 007 | | | | | | | | | |
| 8" Long Extension (Mech or Digital) | 008 | | | | | | | | | |
| 1" Increments for Extensions Lengths | XXX | | | | | | | | | |
| 144" Maximum extension length | 144 | | | | | | | | | |
| High Temp Option | | | | | | | | | | |
| High Temp Prop and Seals | H | | | | | | | | | |



TP1 / TP2 SPECIFICATIONS

Performance

| | |
|--------------------------|---|
| Accuracy | Plus or minus 2% of actual flow within the range specified for each meter size |
| Range | 2" to 72" |
| Pressure Range | Up to 150 PSI maximum working pressure |
| Temperature Range | 140° F maximum. Consult factory for special construction for higher temperatures |
| Flow Ranges | See Min-Max-Int Flow Ranges column in the table of meter specifications on page 8. <ul style="list-style-type: none"> • Size and construction are rated for continuous operation. • Min and max flow ranges will vary according to meter size and construction. • Min flow will be higher when auxiliary equipment is added. • Intermittent flow is rated for 10%-15% of the total time the meter is operating. • Consult factory for high velocity construction when intermittent flows are higher than shown in the table of meter specifications on page 8 and/or when longer operating periods are required. |

Materials

Materials used in construction are chosen to minimize the corrosive effects of the liquids measured by the meter assembly.

| | |
|--------------------------|---|
| Magnets | Anticorrosive aluminized barrier coated magnets; Everlube 6155 |
| Interior Bearings | Shielded stainless steel |
| Propeller Bearing | Ceramic sleeve type |
| Propeller Spindle | Ceramic sleeve/stainless steel |
| Propeller | Injection molded thermoplastic |
| Gearbox | Stainless steel |
| Separator | Stainless steel |
| Shafts | Stainless steel |
| Meter Head Bolts | Stainless steel |
| Meter Head | Cast iron or fabricated steel, NSF approved fusion epoxy coated |

Optional Equipment

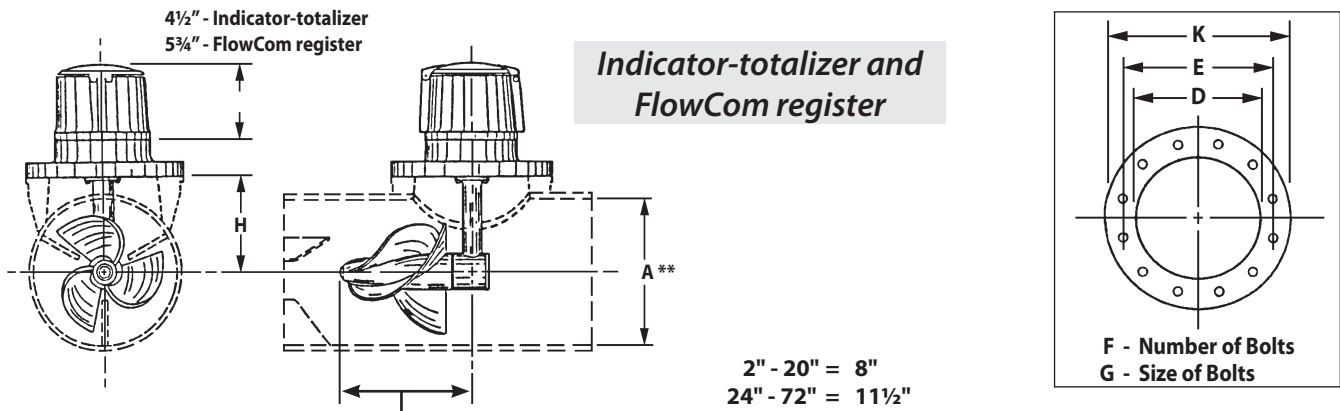
Totalizer extensions and a wide range of controls and instruments for indicating, totalizing and recording flow data for each meter. Special constructions and materials are available upon request.

ORDERING INFO

Meters must be specified by the customer and includes:

- Meter size
- Model number
- Serial number of the meter it is replacing
- Minimum & maximum flow ranges
- Temperature of meter environment
- Indicator scale & units
- Totalizer dial units
- Type of materials and construction
- Optional equipment desired
- Installation requirement - Horizontal or vertical

DIMENSIONS



| Meter & Pipe size (inches) | Flow Ranges, GPM | | Dimensions | | | | | | | Est. Shipping Weight (lbs.) |
|----------------------------|---------------------------------------|--------------------------------------|------------|--------|--------|----|-------|--------|--------|-----------------------------|
| | Standard Construction Min - Max - Int | High Velocity Construction Min - Max | A | D | E | F | G | H | K | |
| 2 | 40-160 | N/A | 3 | 3 1/4 | 7 3/4 | 8 | 1/2 | 3 1/4 | 9 | 35 |
| 3 | 45-250-350 | N/A | 3 | 3 1/4 | 7 3/4 | 8 | 1/2 | 3 1/4 | 9 | 35 |
| 4 | 55-500-700 | 200-700 | 4 | 4 3/8 | 7 3/4 | 8 | 1/2 | 3 1/4 | 9 | 35 |
| 6 | 120-1200-1500 | 300-1500 | 6 | 5 3/8 | 7 3/4 | 8 | 1/2 | 4 1/4 | 9 | 35 |
| 8 | 150-1500-2000 | 400-2500 | 8 1/8 | 6 1/2 | 7 3/4 | 8 | 1/2 | 5 1/4 | 9 | 35 |
| 10 | 180-2000-3000 | 500-3500 | 10 1/4 | 8 1/4 | 9 3/4 | 8 | 1/2 | 6 1/2 | 11 | 45 |
| 12 | 200-3000-3500 | 800-5000 | 12 1/4 | 8 1/4 | 9 3/4 | 8 | 1/2 | 7 1/2 | 11 | 50 |
| 14 | 300-4000-4500 | 1000-6000 | 13 1/2 | 10 | 12 1/4 | 8 | 1/2 | 8 1/2 | 13 1/2 | 55 |
| 16 | 400-5000-6000 | 1200-7500 | 15 1/4 | 10 | 12 1/4 | 8 | 1/2 | 9 1/2 | 13 1/2 | 55 |
| 18 | 700-6000-7500 | 1500-9000 | 17 1/4 | 10 | 12 1/4 | 8 | 1/2 | 10 1/2 | 13 1/2 | 55 |
| 20 | 850-8000-9000 | 2000-12000 | 19 1/4 | 10 | 12 1/4 | 8 | 1/2 | 11 1/2 | 13 1/2 | 55 |
| 24 | 1000-10000-13500 | 3000-15000 | 23 1/4 | 13 3/8 | 18 3/4 | 12 | 1 | 15 1/2 | 21 | 190 |
| 30 | 1800-15000-21000 | 4000-25000 | 29 | 13 3/8 | 18 3/4 | 12 | 1 | 18 1/2 | 21 | 190 |
| 36 | 2000-20000-30000 | 5000-35000 | 35 | 13 3/8 | 18 3/4 | 12 | 1 1/4 | 21 1/2 | 21 | 190 |
| 42 | 3000-30000-40000 | 6000-50000 | 41 | 23 3/8 | 29 1/2 | 20 | 1 1/4 | 25 | 32 | 365 |
| 48 | 5500-35000-50000 | 7000-60000 | 47 | 23 3/8 | 29 1/2 | 20 | 1 1/4 | 28 | 32 | 365 |
| 54 | 6500-45000-55000 | 8000-65000 | 53 | 23 3/8 | 29 1/2 | 20 | 1 1/4 | 31 | 32 | 365 |
| 60 | 7500-60000-80000 | 10000-90000 | 59 | 23 3/8 | 29 1/2 | 20 | 1 1/4 | 34 | 32 | 365 |
| 66 | 8500-75000-95000 | 12000-105000 | 65 | 23 3/8 | 29 1/2 | 20 | 1 1/4 | 37 | 32 | 365 |
| 72 | 9500-90000-115000 | 15000-125000 | 71 | 23 3/8 | 29 1/2 | 20 | 1 1/4 | 40 | 32 | 365 |

INSTALLATION

For new saddle installations, a hole is cut in the existing pipe line and the saddle is welded to the line. The meter head assembly can then be bolted to the saddle. For replacements or retrofits, the existing meter head assembly can be easily removed and replaced.

The meter can be installed horizontally, vertically, or inclined on suction or discharge lines. The meter must have a full flow of liquid for proper accuracy. Complete installation, removal, and reinstallation instructions can be found in the meter's Installation, Operation, and Maintenance Manual.

PIPE RUN REQUIREMENTS

Fully opened gate valves, fittings, or other obstructions that tend to set up flow disturbances should be a minimum of ten pipe diameters upstream and two pipe diameters downstream from the meter. Installations with less than ten pipe diameters of straight pipe require straightening vanes. Meters with straightening vanes require at least five pipe diameters upstream and two pipe diameters downstream of the meter.

An optional remote mounting kit with up to 100 feet of cable is available to locate the indicator-totalizer at remote locations.

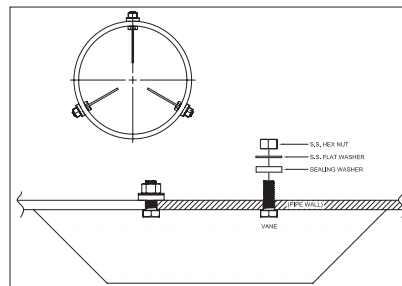
| Configuration | A | B |
|-----------------------------|----|---|
| Without straightening vanes | 10 | 1 |
| With straightening vanes | 5 | 1 |

| Dimension C varies depending on meter size. | |
|---|---------|
| Meters 2" - 20" | 8" |
| Meters 24" - 72" | 11 1/2" |

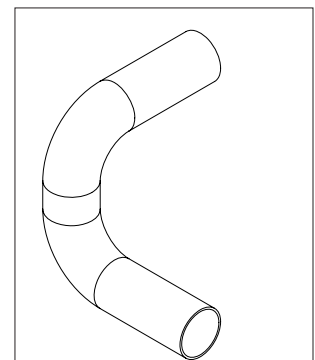
STRAIGHTENING VANES

Special attention should be given to systems using two elbows "out of plane" or devices such as a centrifugal sand separator. These cause swirling flow in the line that affect propeller meters. Well developed swirls can travel up to 100 diameters downstream if unobstructed. Since most installations have less than 100 diameters to work with, straightening vanes become necessary to alleviate the problem.

Straightening vanes will break up most swirls and ensure more accurate measurement. McCrometer actively encourages installing vanes just ahead of the meter. Straightening vanes are available in weld-in and bolt-in.



Bolt-in straightening vanes



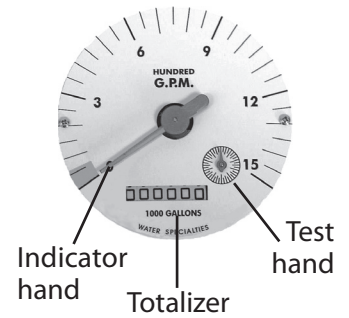
Elbows out of plane

REGISTERS AND TOTALIZERS

Mechanical Register and Indicator-Totalizer

The instantaneous flow rate indicator is standard and available in gallons per minute, cubic feet per second, liters per second and other units.

The register housing protects both the register and cable drive system from moisture while allowing clear reading of the flow rate indicator and totalizer.



Indicator-totalizer

Digital Totalizer

The optional FlowCom register displays a flow meter's flow rate and volumetric total. Available are optional outputs: scaled pulse and/or industry standard 4-20mA signal. The FlowCom can be fitted to any new or existing McCrometer propeller flow meter.

Automated meter reading for the FlowCom register is available with the Smart Output transmitter option.



FlowCom register

Wireless Telemetry

The optional FlowConnect is designed specifically for wireless telemetry via either satellite or cellular data service. Manual meter reading is never required. It uses either the mechanical register or the digital register (both shown above).

You can determine how often readings are made and transmitted to the cloud database, which you can view on a PC or on a cell phone. The viewing utility provides data tools that can analyze flow rate, consumption, and possible anomalies in an irrigation system.



FlowConnect

Copyright © 2021 McCrometer, Inc. All printed material should not be changed or altered without permission of McCrometer. Any published pricing, technical data, and instructions are subject to change without notice. Contact your McCrometer representative for current pricing, technical data, and instructions.