

Battery Installation and Replacement Procedure for the ProComm GO Converter

This procedure applies to all flow meters with the ProComm GO converter. It describes how to install batteries in a new meter and how to replace batteries using the replacement battery kit PGK01.

WARNING
EXPLOSION HAZARD. DO NOT DISCONNECT WHILE THE CIRCUIT IS LIVE OR UNLESS THE AREA IS FREE OF IGNITABLE CONCENTRATIONS.

Before you begin:

Check materials and tools to ensure you have everything you need.

Materials Provided (shown in order of use)

One triple D battery pack

One double A battery pack

Replacement cover gasket

Molykote lubricant

Zip ties:
• 2 large
• 1 small

Dry pack

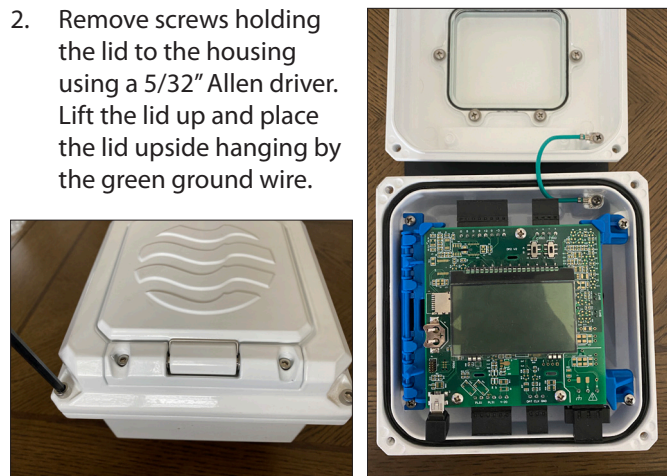
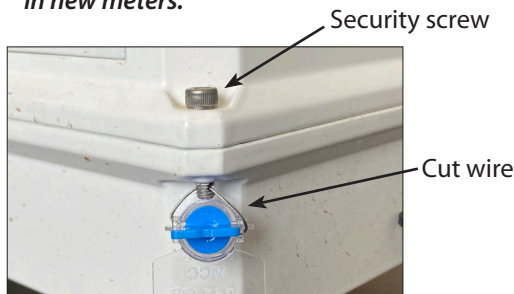
Tamper proof wire seal

Tool Required

Wire cutters
Phillips screwdriver
5/32" Allen driver

I. Removing the cover

1. Cut off the tamper-proof seal and remove the wire from the security screw.
NOTE: This step is not required for battery installation in new meters.
2. Remove screws holding the lid to the housing using a 5/32" Allen driver. Lift the lid up and place the lid upside hanging by the green ground wire.

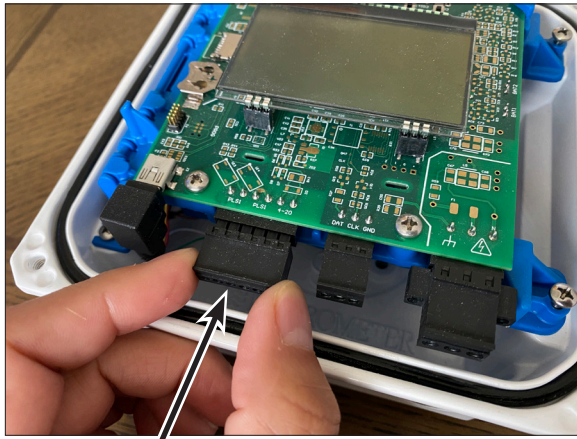


If you are replacing batteries with fresh batteries, continue to step 3.

If you are installing batteries in a new meter that does not have batteries already installed, go to step 9.

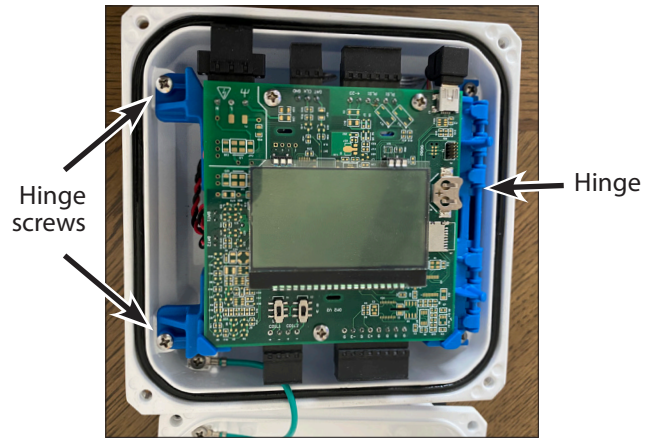
II. Removing the batteries

3. Unplug tall connectors to sensor, outputs, and power.

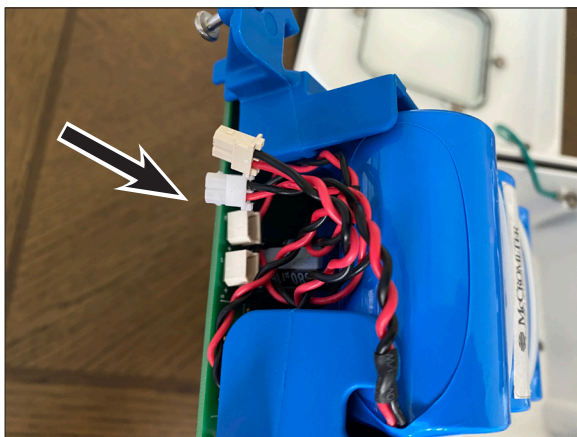


Connectors

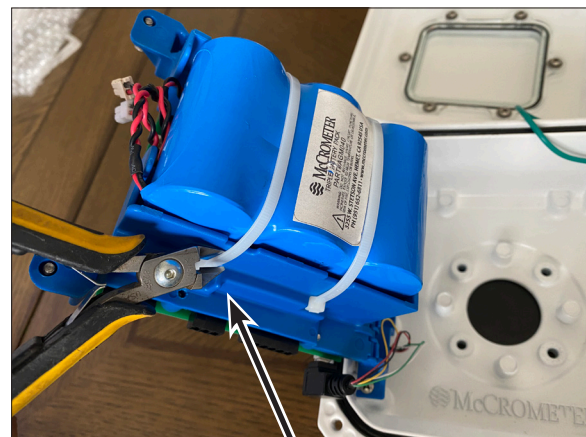
4. Loosen the captive screws opposite of the hinge and lift the battery cover.



5. Unplug the batteries.



6. Cut the two zip ties securing the batteries.



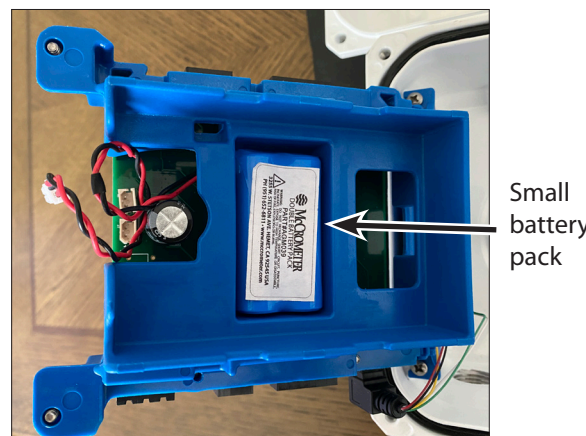
Zip ties

7. Remove the large battery pack.



Large battery pack

8. Remove the small battery pack located underneath. Pull the wires carefully from underneath the battery tray.



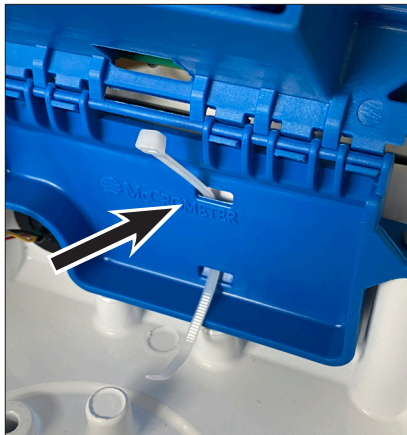
Small battery pack

III. Installing the batteries and restoring the power

9. Cut the zip tie holding the dry pack to the hinge on the converter base.



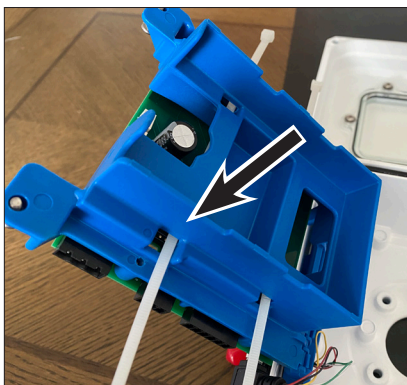
10. Pass the new zip tie through the slots in the internal hinge.



11. Wrap the new zip tie around the new dry pack and cut off the excess.



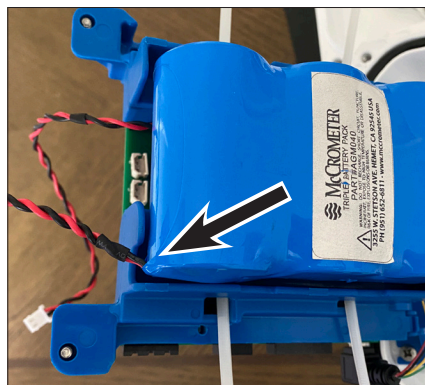
12. Pass the two large zip ties through the slots in the internal tray holder.



13. Place the small battery pack in the center pocket, making sure the wire leads go out through the opening.



14. Place the large battery pack on the internal tray with wire leads passing through the slot.

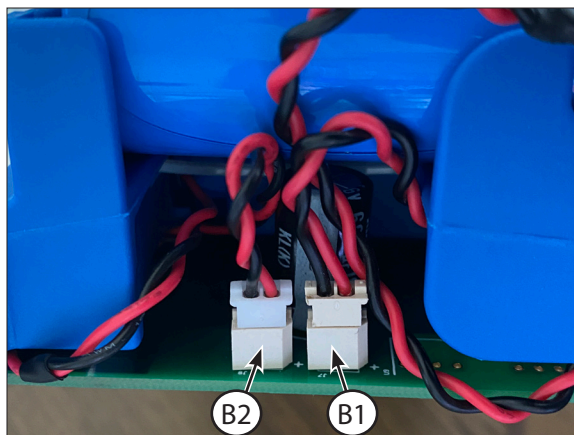


15. Secure the battery packs to the internal tray with the two large zip ties. Cut off the excess of each of the zip ties.

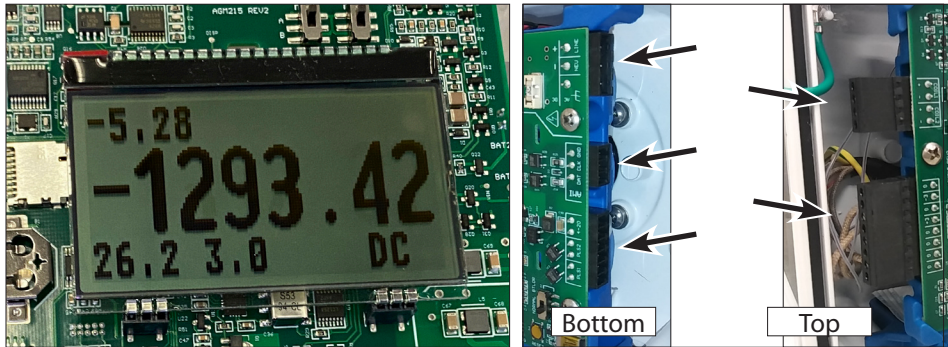


16. Plug the batteries into the circuit board.

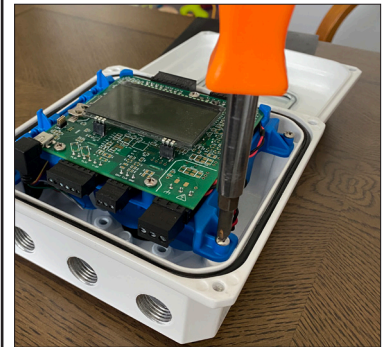
- The large battery pack goes to connector B1.
- The small battery pack goes to connector B2.



17. Set the hinged LCD/internal battery cover back in place to see the display. The unit will start to power up. Plug in all of the connectors to the board. Ensure that the unit is powered normally and there are no alarms.



18. Replace the two screws that hold the LCD/battery cover in place.

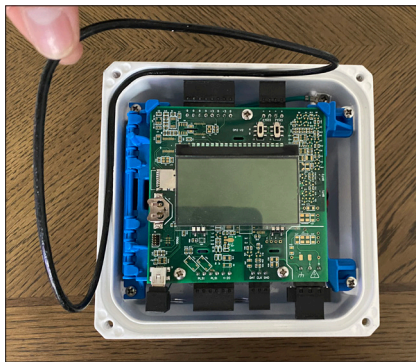


IV. Replacing the gasket

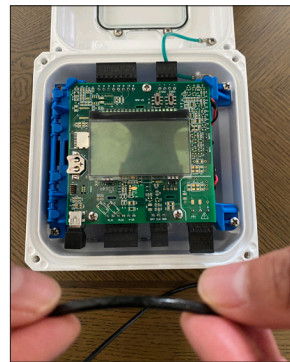
If you installed replacement batteries, we recommend that you replace the gasket.

If you installed new batteries, you must set the gasket in place before replacing the cover and closing up the unit.

19. If your unit has a gasket, remove it.



20. Apply a light coating of Molykote to the replacement gasket.



21. Place the gasket in the groove and press it in.

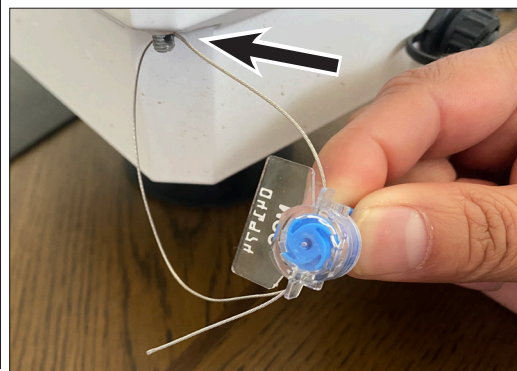


V. Replacing the cover

22. Place the converter lid onto the housing. Tighten the screws firmly. Be careful not to pinch any wires between the lid and the base.



23. Fasten the tamper proof seal as follows:
 a. Guide the wire through the hole in the screw.
 b. Thread the wire through the body of the tamper proof seal.



24. Rotate the blue part on the tamper proof seal to bring in the wire and secure the seal close to the screw.



Copyright © 2022 McCrometer, Inc. All printed material should not be changed or altered without permission of McCrometer. Any published pricing, technical data, and instructions are subject to change without notice. Contact your McCrometer representative for current pricing, technical data, and instructions.