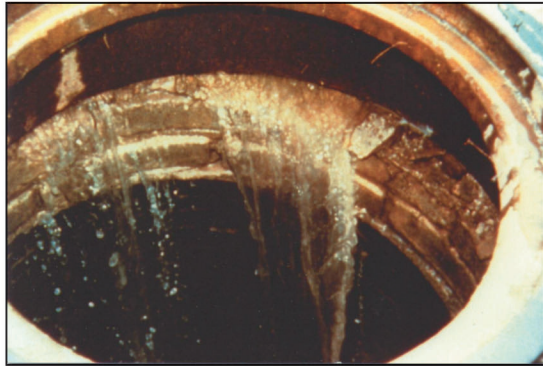




# INFI-SHIELD®

*Prevents Inflow and Infiltration in Sanitary Manholes*

*Provides Erosion Control by Preventing Siltation in Manholes*



**The Problem**



**The Problem**

The new and improved **Infi-Shield® Uni-band** is an inexpensive and permanent method of externally sealing the grade adjustment ring area of a manhole. The one piece molded seal has a reinforced preformed L shaped corner. Accommodating ground movement, **Infi-Shield Uni-band's** high quality rubber and non-hardening butyl mastic provide a flexible water-tight seal around the structure. **Infi-Shield® Uni-band** saves taxpayer's money by not having to treat the extra clear water and by avoiding expensive repair and maintenance costs.

## The Solution

**New & Improved Seal**

**Works on top slab installations too!**



Sealing Systems, Inc.

9350 County Road 19 ♦ Loretto, MN 55357 ♦ 763-478-2057 ♦ 800-478-2054 ♦ Fax 763-478-8868 ♦ [www.infi-shield.com](http://www.infi-shield.com)

# INFI-SHIELD®

## APPLICATION STANDARDS & TECHNICAL DATA TEST RESULTS

<u>PROPERTY</u>	<u>ASTM TEST METHOD</u>	<u>REQUIREMENTS</u>	<u>TEST RESULTS</u>
HARDNESS	D2240	60 +/-5 DURO	61 DURO
TENSILE	D412	1200 PSI/MIN	1510 PSI/MIN
ELONGATION	D412	350 % MIN	460%
OZONE RESISTANCE	D1149 72 HRS @ 50 PPHM	NO CRACKS	PASS
COMPRESSION SET	D395 METHOD B 22 HRS @ 77°C	25% MAX	24%
HEAT AGED HARDNESS	D573 70 HRS @ 100° C	No Requirements	+65(+4 PTS)
HEAT AGED TENSILE	D573 70 HRS	-15% MAX	-1390 PSI (-14%)
HEAT AGED ELONGATION	D573 70 HRS @ 100°C	-20% MAX	370% (-20%)
WATER RESISTANCE	D471 70 HRS @ 100°C	VOLUME CHANGE +10% MAX	+1.8%
LOW TEMPERATURE BRITTLENESS	D2137 -40°C	NO CRACK ON IMPACT	PASS



The **Infi-Shield® Uni-band** has an inspection tab attached at the top of the seal and an aerosol primer is also included. A clean surface is necessary but no special tools are required for installation. The **Infi-Shield® Uni-band** can be immediately backfilled.



Sealing Systems, Inc.

9350 County Road 19. ♦ Loretto, MN 55357 ♦ 763-478-2057 ♦ 800-478-2054 ♦ Fax 763-478-8868 ♦ [www.infi-shield.com](http://www.infi-shield.com)